



HSL - 200 Series

Specification Grade Wraparound

The 200 Series combines the desirable characteristics of the traditional wraparound with an extremely low silhouette to provide a specification luminaire for the conservative budget. Engineered to provide comfortable brightness values in the direct glare zone, the 200 Series is available in two, four and eight foot lengths and is an ideal series for schools, stores and offices. The upright component adds to its attractiveness as well as efficiency.

Ordering Information

Example: HSL-200 A 432 MV

Series	Lens	Lamp Count	Lamp Type	Tandem Code [1]	Ballast & Voltage [1]	Options [1]
HSL 200 Specifications Grade Wrap- around	A Prismatic Acrylic #12 Pattern	2 or 4 Lamps Not Included	17 24in T8 32 48in T8 54 46in T5HO	Blank No Tandem 8 8' Tandem Strip (double lamp count)	S Residential 120V Ballast E120 Electronic, 120V E277 Electronic, 277V MV Electronic, Multivolt (120-277) H120 Electronic, 120V Hi-Lume [3] H277 Electronic, 120V Hi-Lume [3]	EM Emergency Ballast, 500 lumens L11 Emergency Ballast, 1400 lumens Note: EM14 required for T5HO lamps

Notes

1. See end of T02SURF for many additional lamps, ballasts, finishes and options
2. Custom louvers available in any cell configuration. Consult factory for additional information
3. HiLume and LoLume ballasts available for T8 lamps only
4. Consult factory for custom finishes

LAMP

- 2 or 4 lamp positions

SIZE W X L X H in inches (mm)

- 2 Lamp - 11.25W x 24.0L x 3.4Dp (2ft.)
- 2 Lamp - 15.8W x 24.0L x 3.4Dp (2ft.)
- 4 Lamp - 11.25W x 48.0L x 3.4Dp (4ft.)
- 4 Lamp - 15.8W x 48.0L x 3.4Dp (4ft.)

CONSTRUCTION

- Body and ends are die blanked, pierced and formed of 20 gauge cold rolled prime steel for rigidity and uniformity. Forming of the housing has been engineered to provide added strength along its entire

length. Socket bars and wireway covers snap in place for easy installation and maintenance.

ELECTRICAL

- Unless otherwise specified, ballasts are rapid start class "P" thermally protected, H.P.F., CBM-ETL. Optional ballasts available include: energy saving (ESB), electronic (ELB), dimming (DIM), low temperature (LW). Standard voltage on all fixtures is 120V 60Hz AC, or as specified. Sufficient knockouts are provided on the back and ends for all connections and through wiring.
- All fixtures bear U.L. labels.

DIFFUSERS

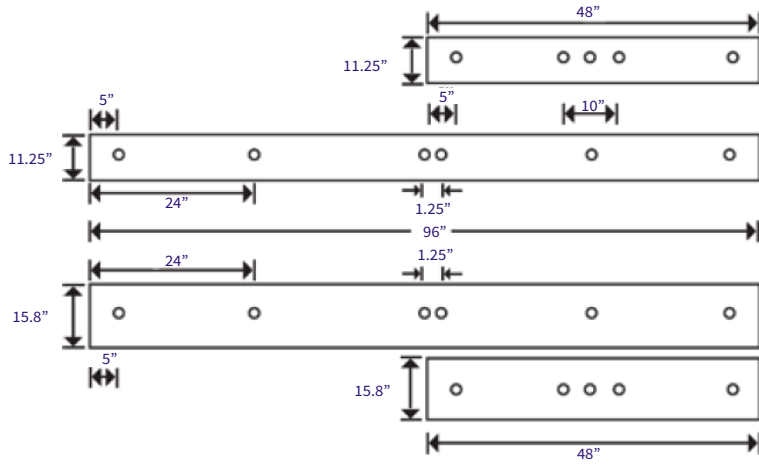
- A crystal clear diffuser extruded from 100% virgin acrylic that will maintain its color under normal conditions, indefinitely. Linear prisms on the interior side walls direct the light ceilingwards, which can then refract back down. The bottom is composed of an evenly spaced pattern of conical prisms yielding low brightness, glare free diffused light. Diffuser is lift and shift for ease of re-lamping and cleaning and is capable of hanging down from either side of the housing.

LISTING

- Fixture & Ballast: UL Listed Ballast: Thermally protected, class P, HPF, Non PCBthe T02STRIP section, or contact factory for more details.

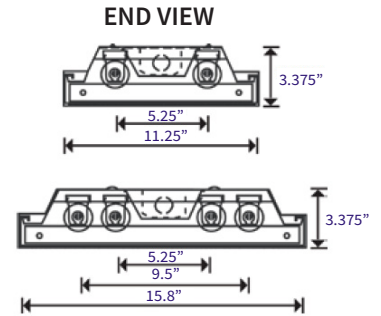
LOCATION OF KNOCKOUTS ON TOP OF HOUSING

All knockouts of 7/8" unless noted otherwise



HSL - 200 Series

Specification Grade Wraparound



DIMENSIONS

All dimensions are inches. Specifications subject to change without notice.

PHOTOMETRICS

Calculated using the zonal cavity method in accordance with ESNALM41 procedure. Lamp configurations shown are typical. Photometric data on these and other configurations available upon request.

Coefficients of Utilization 2-Lamp - 40 Watt

Floor	20%	20%	20%	20%	20%	20%	20%	20%	20%
Ceiling	80%	80%	80%	70%	70%	70%	50%	50%	50%
Wall	70%	50%	30%	70%	50%	30%	50%	30%	10%
RCR	Zonal cavity coefficients			200A240			Spacing ratio. Along 1.2 Across 1.3		
1	0.69	0.66	0.63	0.67	0.64	0.62	0.63	0.61	0.59
	0.66	0.63	0.60	0.65	0.62	0.59	0.61	0.59	0.57
3	0.64	0.60	0.58	0.62	0.58	0.55	0.59	0.55	0.53
4	0.61	0.57	0.53	0.59	0.56	0.52	0.56	0.53	0.51
5	0.58	0.53	0.49	0.56	0.52	0.49	0.53	0.50	0.47
6	0.53	0.48	0.44	0.51	0.47	0.43	0.48	0.45	0.42
7	0.49	0.44	0.40	0.48	0.43	0.39	0.45	0.41	0.38
8	0.44	0.38	0.34	0.43	0.38	0.34	0.41	0.36	0.33
9	0.38	0.33	0.29	0.39	0.34	0.28	0.36	0.31	0.28
10	0.30	0.25	0.21	0.29	0.24	0.21	0.28	0.24	0.21

Distribution Curve

