

HSL - 209 LED SERIES

LED Shallow Economy Wraparound



FEATURES & SPECIFICATIONS:

A shallow economy designed LED Wrap Around Fixture offering high efficiency. This luminaire is available in two foot or four foot lengths. For a low initial cost, this fixture provides for great light output using very little energy.

Intended Use:

Fixture is a surface mount wrap and great for many applications including industrial or commercial, schools, hospitals, and offices. It installs easily and can be used in hard deck ceiling applications.

Typical Options and Accessories:

EM - Emergency battery backup, WP - whips.

Construction:

Completely die formed from heavy gauge cold rolled steel. Design embossed ends are locked and secures to the housing. Wireway cover snaps on or off without tools.

Mounting:

Suitable for individual or continuous run installation. May be surface or pendant mounted.

DIFFUSER

This 209 wrap fixture has a crystal clear diffuser extruded from 100% virgin acrylic that will maintain its color under normal conditions, indefinitely. Linear prisms on the interior side walls direct the light ceiling-ward, which can then refract light back down. The bottom of the lens is composed of evenly spaced conical prisms in a pattern that allows for bright evenly diffused light output without glare. Diffuser is lift and shirt for easy removal and is capable of hanging down from either side of the housing.

SIZE:

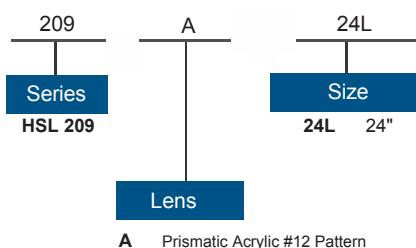
W x L x H in inches

9.375W x 24L x 3.1Dp (2ft.)

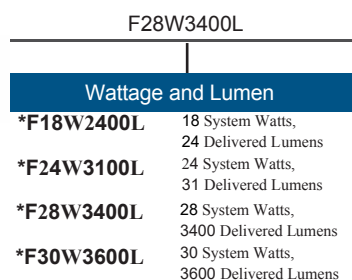
9.375W x 48L x 3.1Dp (4ft.)

209 2ft

STANDARD



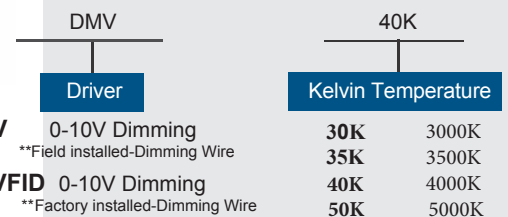
ORDERING INFORMATION



Check DLC listing for most current/additional Wattage and Lumen Options.

** Consult Factory for more options

Example: HSL 209A24LF28W3400LDMV40K



HSL - 209 SERIES LED Wrap Fixture

LED Shallow Economy Wraparound

209 4ft

ORDERING INFORMATION

STANDARD

Example: HSL 209A48LF32W3450LDMV40K

209	A	48L	F32W3450L	DMV	40K
Series	LENS	Size	Wattage and Lumen	Driver	Kelvin Temperature
HSL 209	A Prismatic Acrylic #12 Pattern	48L 48"	<p>*F23W2650L 23 System Watts, 2650 Delivered Lumens</p> <p>*F32W3450L 32 System Watts, 3450 Delivered Lumens</p> <p>*F48W4800L 48 System Watts, 4800 Delivered Lumens</p> <p>*F57W5400L 57 System Watts, 5400 Delivered Lumens</p>	<p>DMV 0-10V Dimming **Field installed-Dimming Wire</p> <p>DMVFID 0-10V Dimming **Factory installed-Dimming Wire</p>	<p>30K 3000K</p> <p>35K 3500K</p> <p>40K 4000K</p> <p>50K 5000K</p>



Check DLC listing for most current/additional Wattage and Lumen Options.

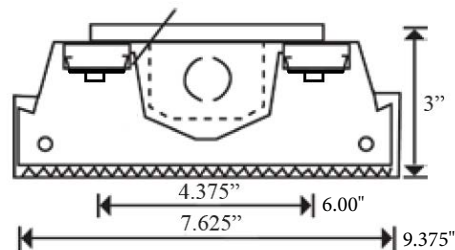
HIGH OUTPUT OPTIONS AVAILABLE - Consult Factory

Example: HSL 209FR48LF57W6000LDMV40K

209	FR	48L	F57W6000L	DMV	40K
Series	LENS	Size	Wattage and Lumen	Driver	Kelvin Temperature
HSL 209	FR Prismatic Acrylic light frost	48L 48"	<p>F57W6000L 57 System Watts, 6000 Delivered Lumens</p> <p>H72W8200L 72 System Watts, 8200 Delivered Lumens</p>	<p>DMV 0-10V Dimming **Field installed-Dimming Wire</p> <p>DMVFID 0-10V Dimming **Factory installed-Dimming Wire</p>	<p>30K 3000K</p> <p>35K 3500K</p> <p>40K 4000K</p> <p>50K 5000K</p>

DIMENSIONS

All dimensions are inches. Specifications subject to change without notice.



** Consult Factory for more options

