

HSL 44 Series 4ft

Wall Mount/ Surface Mount Linear Fixture



FEATURES & SPECIFICATIONS

INTENDED USE

A linear 4 x 4 fixture for distinctive architectural lighting plans. Ideal for corridors, lobbies, and office areas, 4 x 4 Series fixtures can be installed individually or in group patterns.

SIZE W x L x H in inches (mm)

4ft. - 4" x 48" x 4"

8ft. - 4" x 96" x 4"

HOUSING

Die-formed and welded 22-gauge cold rolled steel Knockouts on ends allow continuous wireway mounting. A 1/2" regressed flange at the bottom insures uniformity and rigidity. Uplight fixtures have 1/2" x 4" apertures along the top of the housing to provide approximately uniform ambient uplight for ceiling illumination.

DIFFUSERS (not included)

Fixture accepts various lenses or louvers. 4' and 8' units have a steel mullion to join two individual diffusers.

MOUNTING

Fixtures can be surface mounted to the ceiling or pendant hung by stem or cable.

TYPICAL OPTIONS AND ACCESSORIES

Cord sets, whips, occupancy sensors Hanging kits, Wire guards. Contact factory for additional options.

ORDERING INFORMATION

4FT

Example: 44SMW48LUR24W2400LDMV40KWH

44S	MW	48L	U	R24W2400L	DMV	40K	WH
Series	Length			Wattage & Lumen	Color Temperature	Finish	
44W Wall Mount	48L 48"			R24W2400L 24 System Watts, 2400 Delivered Lumens	30K 3000K	WH White	
44WW Wall Mount Wall Wash			Direct/Indirect	R48W4800L 48 System Watts, 4800 Delivered Lumens	35K 3500K	BK Black	
44S Surface Mount			U Up Light Only		40K 4000K	SI Silver	
Direct Only			Blank Down Light Only		50K 5000K		
44SW Surface Mount	Lens Material			Driver			
Wall Wash	SP1 Specular Parabolic Louver			DMV 0-10V Dimming			
Direct Only	PLA White Cubed Acrylic Louver			*Field installed-Dimming Wire			
44P Pendant Mount	BL Bladed Louver Semi Specular			DMVFID 0-10V Dimming			
Direct Only	A Prismatic Acrylic #12 pattern			*Factory installed-Dimming Wire			
44PW Pendant Mount	MW Matte White Lens						
Wall Wash	SF Snap In Frosted Acrylic Lens (85% transmission)						
Direct Only	*Special for LEDs						
				Options			
				HC301WH Cable kit with 4' Cable & 3 Wires Power Feed/Cable Incl. and White Canopy			
				HC302WH Cable kit with 12' Cable & 3 Wires Power feed/Cable Incl. and White Canopy			
				HC3015WWH Cable kit with 4' Cable & 5 Wires Power Feed/Cable Incl. and White Canopy			
				HC3025WWH Cable kit with 12' Cable & 5 Wires Power feed/Cable Incl. and White Canopy			
				2SCS24WH Two Stem kits with 24" Stem, Canopy and Mounting hardware for a 4' fixture			

Plug in system Options - it's for continuous run application by simply plugging in sections together

Part Number	Descriptions
PI1	3 Wires Harness, Including White, Black and Green
PI2	4 Wires Harness, Including White, Black, Green and Blue for Emergency Battery Backup
PI3D	5 Wires Harness, Including White, Black, Green, Violet and Gray

* Add the accessories part numbers at the end to be factory installed

HSL 44 Series 4ft

Wall Mount/ Surface Mount Linear Fixture

FEATURES & SPECIFICATIONS



ORDERING INFORMATION

STANDARD

Example: 44SMW96LR48W4800LDMV40KWH

<p>44S</p> <p>Series</p> <p>44W Wall Mount</p> <p>44WW Wall Mount Wall Wash</p> <p>44S Surface Mount Direct Only</p> <p>44SW Surface Mount Wall Wash Direct Only</p> <p>44P Pendant Mount Direct Only</p> <p>44PW Pendant Mount Wall Wash Direct Only</p>	<p>MW</p> <p>Length</p> <p>96L 96"</p> <p>Direct/Indirect</p> <p>U Up Light Only Blank Down Light Only</p> <p>Lens Material</p> <p>SP1 Specular Parabolic Louver PLA White Cubed Acrylic Louver BL Bladed Louver Semi Specular A Prismatic Acrylic #12 pattern MW Matte White Lens SF Snap In Frosted Acrylic Lens (85% transmission) *Special for LEDs</p>	<p>R48W4800L</p> <p>Wattage & Lumen</p> <p>R48W4800L 48 System Watts, 4800 Delivered Lumens R96W9600L 96 System Watts, 9600 Delivered Lumens</p>	<p>DMV</p> <p>Driver</p> <p>DMV 0-10V Dimming *Field installed-Dimming Wire DMVFID 0-10V Dimming *Factory installed-Dimming Wire</p>	<p>40K</p> <p>Color Temperature</p> <p>30K 3000K 35K 3500K 40K 4000K 50K 5000K</p>	<p>WH</p> <p>Finish</p> <p>WH White BK Black SI Silver</p>
<p>Options</p> <p>HC301WH Cable kit with 4' Cable & 3 Wires Power Feed/Cable Incl. and White Canopy HC302WH Cable kit with 12' Cable & 3 Wires Power feed/Cable Incl. and White Canopy HC3015WWH Cable kit with 4' Cable & 5 Wires Power Feed/Cable Incl. and White Canopy HC3025WWH Cable kit with 12' Cable & 5 Wires Power feed/Cable Incl. and White Canopy 2SCS24WH Two Stem kits with 24" Stem, Canopy and Mounting hardware for a 4' fixture</p>					

Plug in system Options - it's for continuous run application by simply plugging in sections together

Part Number	Descriptions
PI1	3 Wires Harness, Including White, Black and Green
PI2	4 Wires Harness, Including White, Black, Green and Blue for Emergency Battery Backup
PI3D	5 Wires Harness, Including White, Black, Green, Violet and Gray

* Add the accessories part numbers at the end to be factory installed

HSL 44 Series 4ft

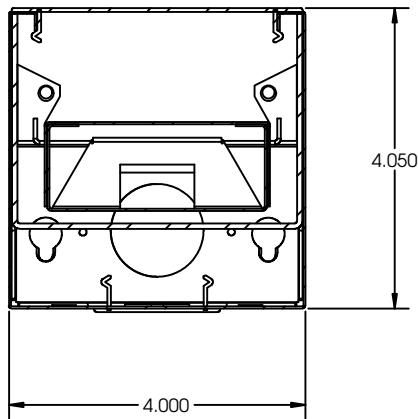
Wall Mount/ Surface Mount Linear Fixture



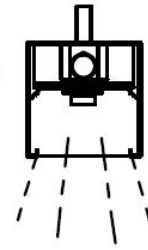
Side View

DIMENSIONS

All dimensions are inches. Specifications subject to change without notice

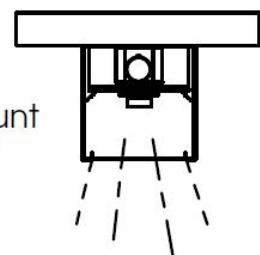


Type **P**
Pendant Mount

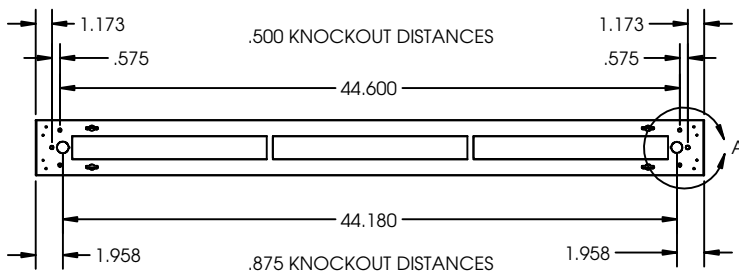


or

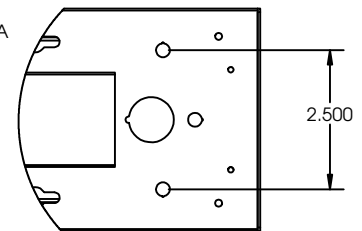
Type **S**
Surface Mount
Direct only



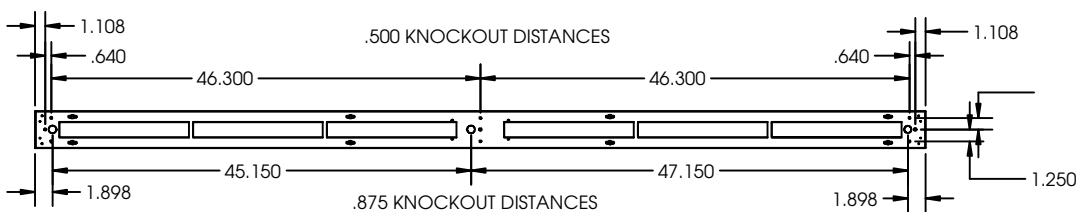
4FT Dimensions



DETAIL A



8FT Dimensions

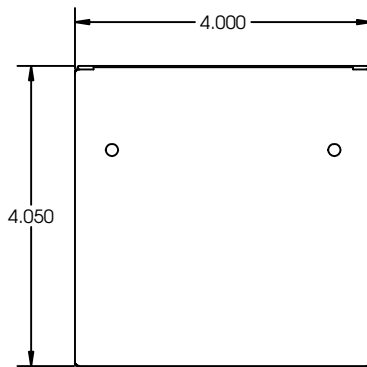


HSL 44 Series 4ft

Wall Mount/ Surface Mount Linear Fixture

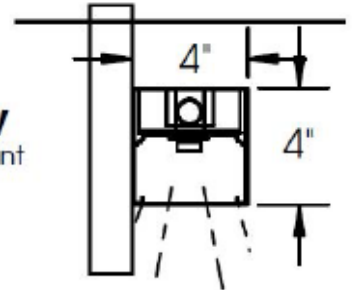


Side View



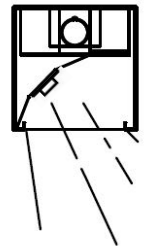
DIMENSIONS

All dimensions are inches. Specifications subject to change without notice

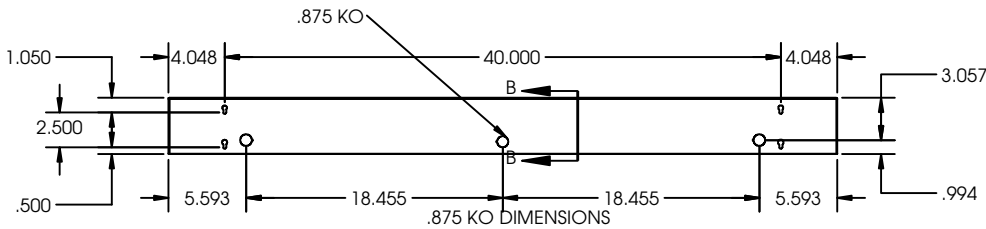


Type **W**
wallmount

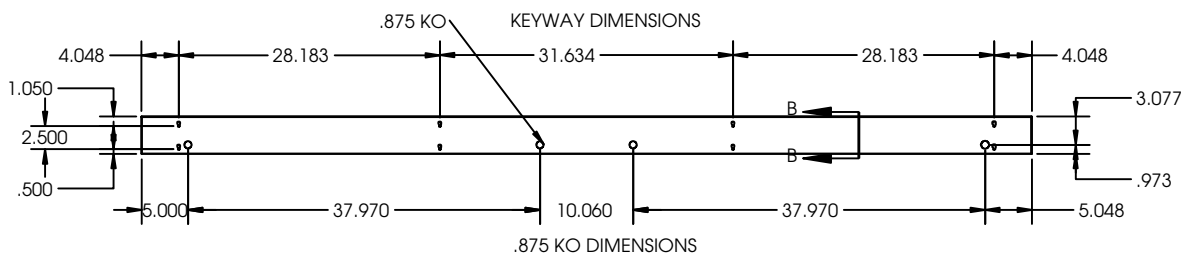
Type **WW**
Wall Wash



4FT Dimensions



8FT Dimensions



HSL 44 Series 4ft

Wall Mount/ Surface Mount Linear Fixture

FEATURES & SPECIFICATIONS

INTENDED USE

A linear 4x4 recessed mounted fixture for distinctive architectural lighting plans. Ideal for corridors, lobbies and office areas. 4x4 Series fixtures can be installed individually or in group patterns. Available with flange or flangeless.

SIZE W x L X H in inches (mm)

4ft. - 4" x 48" x 4"

8ft. - 4" x 96" x 4"

HOUSING

Die-formed and welded 22-gauge cold rolled steel. Knockouts on ends allow continuous wireway mounting. A 1/2" regressed flange at the bottom insures uniformity and rigidity.

DIFFUSERS (not included)

Fixture accepts various lenses or louvers. 4' and 8' units have a steel mullion to join two individual diffusers.

MOUNTING

Fixtures can be recessed mounted in grid ceiling tiles or plaster with flange



LISTING

Fixtures conform to Underwriters' Laboratories standards for production and are carefully tested prior to packing.

TYPICAL OPTIONS AND ACCESSORIES

Emergency ballasts, Cord sets, whips, occupancy sensors, Hanging kits, Wire guards, Contact factory for additional options.



ORDERING INFORMATION

Example: 44RFMW48LR24W2400LDMV35KWH

4FT

44R	F	MW	48L	R24W2400L	DMV	35K	WH
Series			Length	Wattage & Lumen		Color Temperature	Finish
44R			48L 48"	R24W2400L 24 System Watts, 2400 Delivered Lumens		30K 3000K 35K 3500K 40K 4000K 50K 5000K	WH White BK Black SI Silver
44RW Recessed Mounted		Lens Material		R48W4800L 48 System Watts, 4800 Delivered Lumens	Driver		
44RR Recessed Wall Washer			SP1 Specular Parabolic Louver			DMV 0-10V Dimming *Field installed-Dimming Wire	
44RRR Recessed Mounted			PLA White Cubed Acrylic Louver			DMVFD 0-10V Dimming *Factory installed-Dimming Wire	
44RF Recessed Wall Washer			BL Bladed Louver Semi Specular				
44RFW Recessed Mounted			A Prismatic Acrylic #12 pattern				
44RFB Recessed Wall Washer		MW Matte White Lens					
		SF Snap In Frosted Acrylic Lens (85% transmission)					
		*Special for LEDs					

Flange
Blank Flangeless
F Flanged For Exiting Drywall installation
R 1/2" Recessed Flanged For Before Drywall installation

*44R-Designed for standard 1" grid. Consult factory for custom made grid size.

Plug in system Options - it's for continuous run application by simply plugging in sections together

Part Number	Descriptions
PI1	3 Wires Harness, Including White, Black and Green
PI2	4 Wires Harness, Including White, Black, Green and Blue for Emergency Battery Backup
PI3D	5 Wires Harness, Including White, Black, Green, Violet and Gray

* Add the accessories part numbers at the end to be factory installed

Notes *Custom length available. Consult factory for additional information.

HSL 44 Series 4ft

Wall Mount/ Surface Mount Linear Fixture

FEATURES & SPECIFICATIONS



ORDERING INFORMATION

STANDARD

Example: 44RFMW96LR48W4800LDMV35KWH

44R	F	MW	96L	R48W4800L	DMV	35K	WH
Series			Length	Wattage & Lumen		Color Temperature	Finish
44R			96L 96"	R48W4800L 48 System Watts, 4800 Delivered Lumens R96W9600L 96 System Watts, 9600 Delivered Lumens		30K 3000K 35K 3500K 40K 4000K 50K 5000K	WH White BK Black SI Silver
Recessed Mounted							
44RW							
Recessed Wall Washer							
44RR							
Recessed Mounted							
44RRW							
Recessed Wall Washer							
44RF							
Recessed Mounted							
44RFW							
Recessed Wall Washer							
		Lens Material			Driver		
		SP1 Specular Parabolic Louver			DMV 0-10V Dimming *Field installed-Dimming Wire		
		PLA White Cubed Acrylic Louver			DMVFID 0-10V Dimming *Factory installed-Dimming Wire		
		BL Bladed Louver Semi Specular					
		A Prismatic Acrylic #12 pattern					
		MW Matte White Lens					
		SF Snap In Frosted Acrylic Lens (85% transmission) *Special for LEDs					

Flange

Blank Flangeless

F Flanged
For Exiting Drywall installation

R 1/2" Recessed Flanged
For Before Drywall installation

*44R-Designed for standard 1" grid. Consult factory for custom made grid size.

Plug in system Options - it's for continuous run application by simply plugging in sections together

Part Number	Descriptions
PI1	3 Wires Harness, Including White, Black and Green
PI2	4 Wires Harness, Including White, Black, Green and Blue for Emergency Battery Backup
PI3D	5 Wires Harness, Including White, Black, Green, Violet and Gray

* Add the accessories part numbers at the end to be factory installed

HSL 44 Series 4ft

Wall Mount/ Surface Mount Linear Fixture



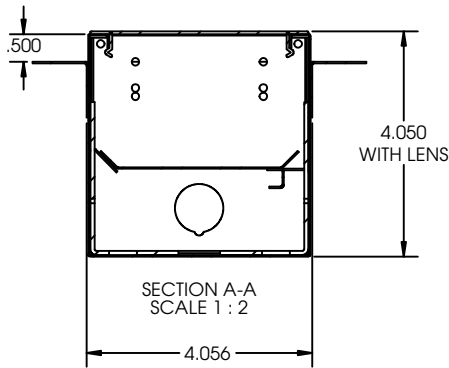
DIMENSIONS

All dimensions are inches. Specifications subject to change without notice

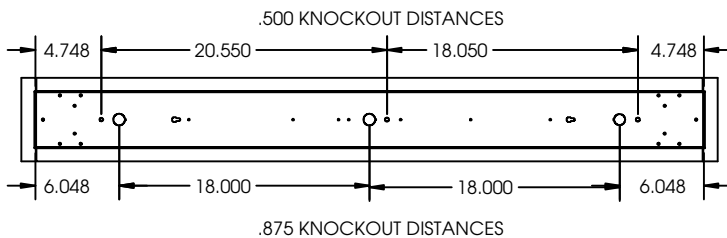
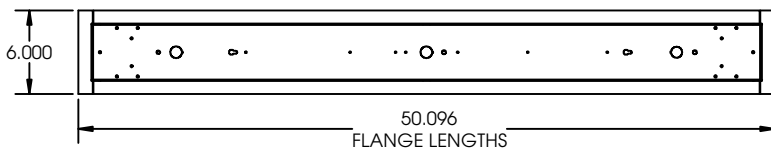


Flange Details

Side View

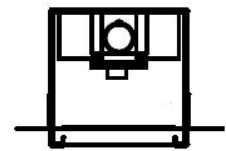


4FT-RR Dimensions



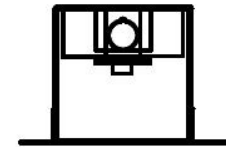
Type RR Recess for Drywall/ Hard Ceiling

- RR (1/2 inch)
- RR650 (5/8 inch)
- RRxxx (custom depth)



Flangeless
Appearance

Type RF Flush for Drywall



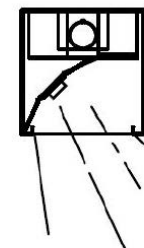
Flanged
Appearance

Type R For 1" T-bar



Flangeless
Appearance

Type RW/RFW/ RRW -Recess Wall Wash



Flanged/
Flangeless
Appearance

Notes *Custom length available. Consult factory for additional information.

*44R-Designed for standard 1" grid. Consult factory for custom made grid size.

HSL 44 Series 4ft

Wall Mount/ Surface Mount Linear Fixture

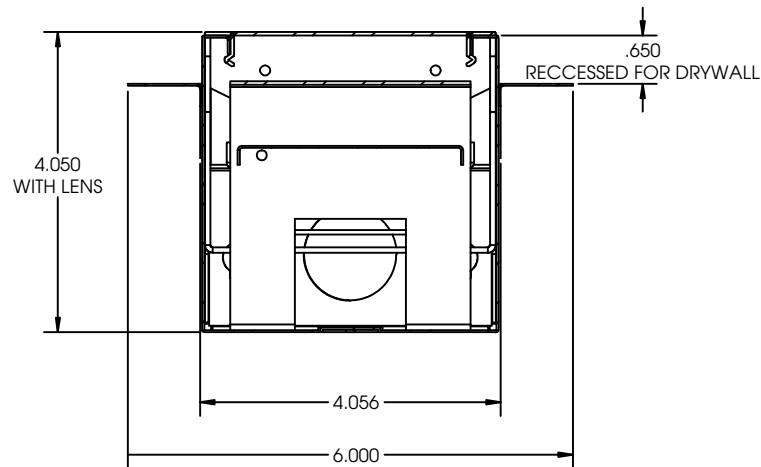


DIMENSIONS

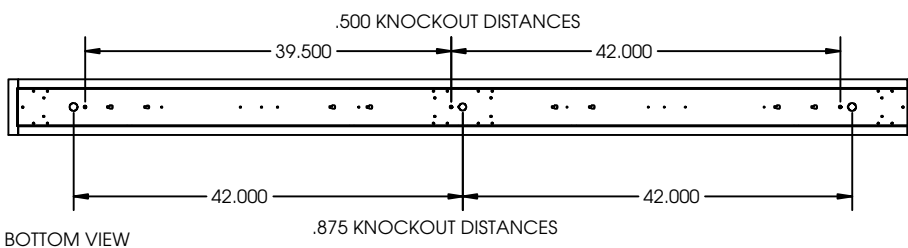
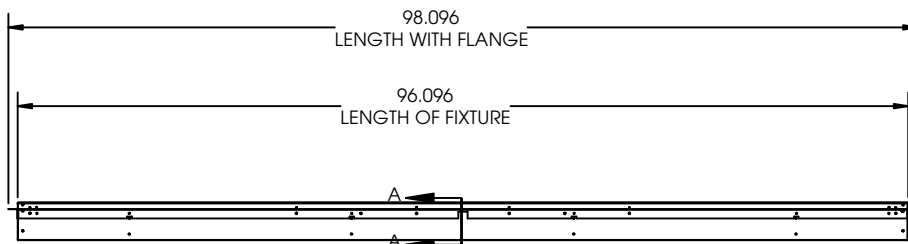
All dimensions are inches. Specifications subject to change without notice



Side View



8FT-RR Dimensions



BOTTOM VIEW

Notes *Custom length available. Consult factory for additional information.