



## HSL- 555 Series

Ceiling/ Wall Mount Luminaire

Stylish ceiling/wall mounted luminaire in either white or wallnut finish with a variety of lamp combinations and sizes enhanced by linear sided acrylic diffuser. Designed for baths, kitchens, rec rooms, corridors, aisles, stairwells, over or beside mirrors, over bulletin boards, in vanities, in displays.

### Ordering Information

Example: HSL-555 MW 114 MV WH

Series	Lens	Lamp Count	Lamp Type	Divider & Front Shield	Ballast & Voltage	Ballast Count	Finish	Options
<b>HSL 555</b> Lensed wall mount Up/down light		<b>1 or 2</b> Lamps not Included		<b>Blank</b> None <b>D</b> Divider Only <b>F</b> Front Shield <b>T</b> Top Shield <b>DF</b> Divider & Front Shield <b>TF</b> Top & Front Shield	<b>E120</b> Electronic 120 V <b>E277</b> Electronic 277 V <b>MV*</b> Electronic 277 V <b>ZMVPSHVO3</b> Multi-volt dimming H ballast (75838)	<b>Blank</b> Single Ballast <b>(11)</b> Dual One Lamp Ballasts	<b>WH</b> White <b>OAK</b> Simulated Oak painted finish <b>WAL</b> Simulated Walnut painted finish <b>CH</b> Chrome <b>CHEND</b> Chrome end caps only	<b>SW2</b> Pull chain, 2 way switching (use with single ballast) <b>GCO</b> Grounded, convenience outlet ( North American 3 Prong) <b>EM</b> Emergency ballast, 500 lumens <b>EM14</b> Emergency ballast, 1100 lumens
<b>A</b> Clear Prismatic acrylic <b>MW</b> Smooth White acrylic		<b>17</b> 24 in. T8 <b>25</b> 36 in. T8 <b>32</b> 48 in. T8 <b>14</b> 24 in. T5 <b>21</b> 36 in. T5 <b>28</b> 48 in. T5 <b>24</b> 24 in. T5HO <b>39</b> 36 in. T5HO <b>54</b> 48 in. T5HO						

1. BOTH Divider and Front Shield REQUIRED for operation of up and down light. Dual ballasts are required for separate switching. Top and Front Shield REQUIRED for 100% down light

2. \*Electronic Ballast, ≤ 10%THP, Instant Start

### SIZE H x W in inches (mm)

- 4.50H x 5.62W (115 x 145)
- Available in 24, 36, and 48in (610, 915, 1220) lengths

### LAMP

- 2 lamp positions

### MOUNTING

- Back plate provided with adequate knockouts and mounting holes for either wall or ceiling installation.

### MATERIALS & FEATURES

- All metal parts are die formed from heavy gauge cold roll steel with overlapping end caps to insure uniformity and dimensional stability. One light and two light units same external dimensions.

### DIFFUSER

- Linear sided prismatic lens of extruded acrylic for controlled light.

### WIRING

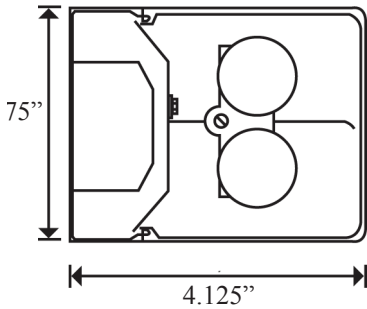
- Standard ballast are 120volts, 60 hertz.

### LISTING

- Fixture & Ballast: UL Listed
- Ballast: Thermally protected, class P, HPF, Non PCB

### OPTIONS AND ACCESSORIES

- Custom finishes, internal divider, front baffle, pull chains, convenience outlets, and Emergency ballasts.
- CONTACT FACTORY for custom, compact fluorescent night light options.
- See options page at the end of the T02WallF section or contact factory for more detail.



## HSL- 555 Series

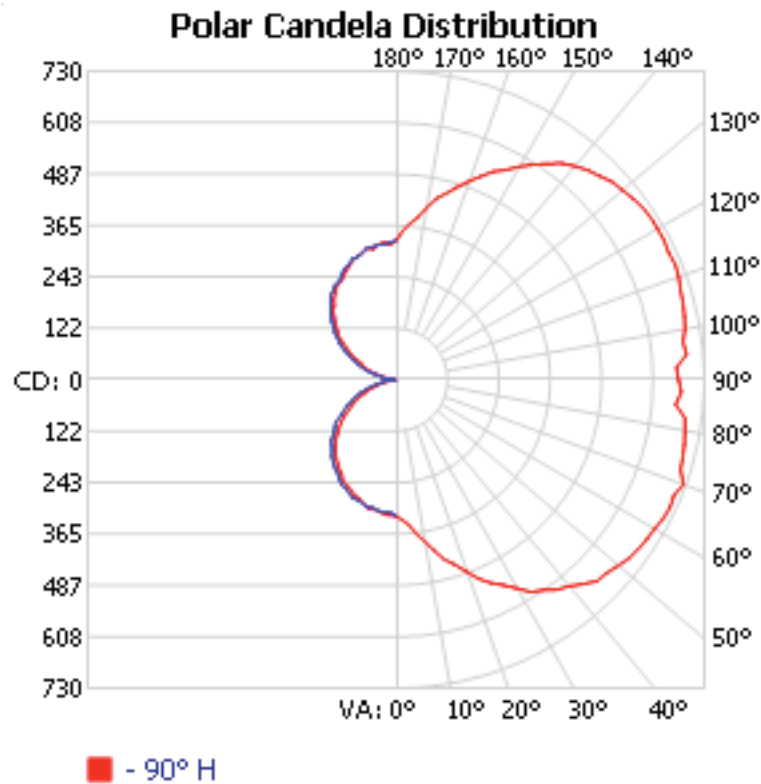
Ceiling/ Wall Mount Luminaire

### Dimensions

All dimensions are inches. Specifications subject to change without notice.

### PHOTOMETRIC REFERENCE

Lamping: 2 Lamp 32W T8  
Efficiency: 64%



LUMENS PER ZONE					
ZONE	LUMENS	% TOTAL	ZONE	LUMENS	% TOTAL
0-10	31.3	0.8%	90-100	225.9	6.1%
10-20	97.0	2.6%	100-110	257.8	7%
20-30	164.0	4.4%	110-120	283.7	7.7%
30-40	222.5	6.0%	120-130	289.5	7.8%
40-50	266.4	7.2%	130-140	269.5	7.3%
50-60	289.7	7.8%	140-150	225.9	6.1%
60-70	287.7	7.8%	150-160	165.8	4.5%
70-80	264.9	7.2%	160-170	99.6	2.7%
80-90	231.1	6.2%	170-180	32.3	0.9%

ZONAL LUMEN SUMMARY			
ZONE	LUMENS	% LAMP	% LUMINAIRE
0-30	292.3	5%	7.9%
0-40	514.8	8.9%	13.9%
0-60	1,070.9	18.5%	28.9%
60-90	783.7	13.5%	21.2%
0-90	1,854.6	32%	50.1%
90-180	1,850.1	31.9%	49.9%
0-180	3,704.7	63.9%	100%

EFFICIENCY TOTAL: 63.9%

## HSL- 555 Series

Ceiling/ Wall Mount Luminaire

AVERAGE LUMINANCE (CD/M2)									
	90	112.5	135	157.5	180	202.5	225	247.5	270
0	4912	4912	4912	4912	4912	4912	4912	4912	4912
45	14519	13484	11154	7421	4660	4466	4466	4466	4379
55	18591	17554	13990	8830	4654	4362	4229	4122	3989
65	25809	23968	18662	11009	4187	4007	3898	3574	3429
75	41435	38429	29470	15737	3772	3360	3006	2476	2476
85	116221	107819	79989	38682	2625	1575	0	0	0

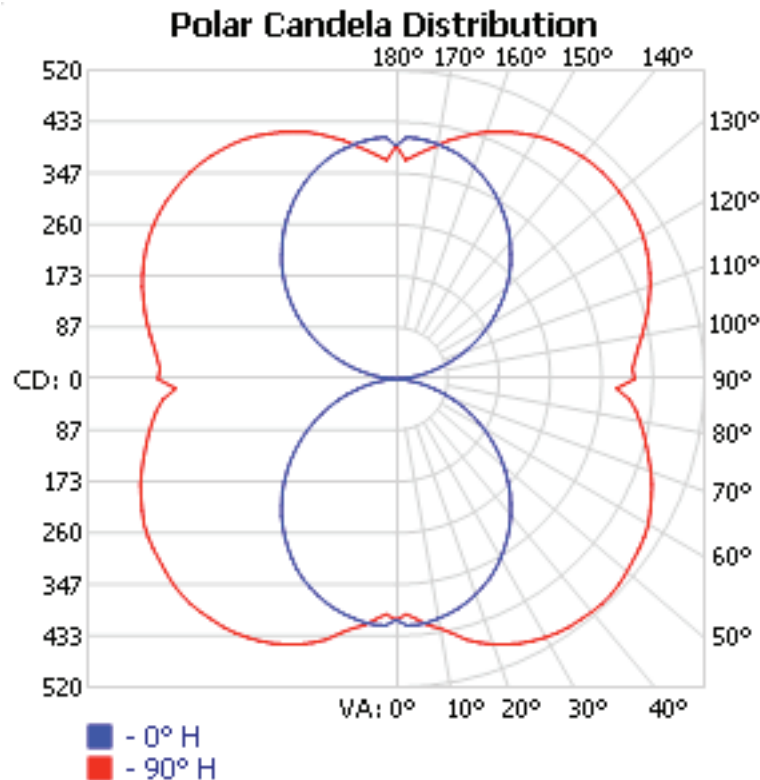
### COEFFICIENTS OF UTILIZATION - ZONAL CAVITY METHOD

EFFECTIVE FLOOR CAVITY REFLECTANCE: 20%

RCC %:	80				70				50			30			10			0
RW %:	70	50	30	0	70	50	30	0	50	30	20	50	30	20	50	30	20	0
RCR: 0	.68	.68	.68	.68	.63	.63	.63	.32	.53	.53	.53	.44	.44	.44	.36	.36	.36	.32
1	.61	.57	.54	.51	.55	.52	.50	.23	.44	.42	.40	.36	.34	.33	.29	.27	.26	.23
2	.54	.49	.44	.40	.50	.45	.40	.18	.37	.34	.31	.30	.28	.26	.24	.22	.21	.18
3	.49	.42	.37	.32	.45	.39	.34	.15	.32	.28	.25	.26	.23	.21	.21	.19	.17	.14
4	.45	.37	.31	.27	.41	.34	.29	.12	.28	.24	.21	.23	.20	.17	.18	.16	.14	.11
5	.41	.32	.27	.22	.37	.30	.25	.10	.25	.21	.18	.20	.17	.15	.16	.14	.12	.10
6	.37	.29	.23	.19	.34	.27	.22	.09	.22	.18	.15	.18	.15	.13	.14	.12	.10	.08
7	.34	.26	.20	.17	.31	.24	.19	.08	.20	.16	.13	.16	.13	.11	.13	.11	.09	.07
8	.32	.23	.18	.14	.29	.22	.17	.07	.18	.14	.12	.15	.12	.10	.12	.09	.08	.06
9	.30	.21	.16	.13	.27	.20	.15	.06	.17	.13	.10	.14	.11	.09	.11	.09	.07	.05
10	.28	.19	.15	.11	.25	.18	.14	.05	.15	.12	.09	.13	.10	.08	.10	.08	.06	.05

### PHOTOMETRIC REFERENCE

Lamping: 2 Lamp 28W T5  
Efficiency: 86%



## HSL- 555 Series

Ceiling/ Wall Mount Luminaire

### LUMENS PER ZONE

ZONE	LUMENS	% TOTAL	ZONE	LUMENS	% TOTAL
0-10	39.7	0.9%	90-100	279.7	6.2%
10-20	123.3	2.7%	100-110	317.7	7.1%
20-30	206.4	4.6%	110-120	346.0	7.7%
30-40	277.0	6.2%	120-130	348.1	7.8%
40-50	326.1	7.3%	130-140	322.2	7.2%
50-60	348.3	7.8%	140-150	271.0	6%
60-70	342.4	7.6%	150-160	200.7	4.5%
70-80	311.5	6.9%	160-170	119.9	2.7%
80-90	269.4	6.0%	170-180	38.7	0.9%

### ZONAL LUMEN SUMMARY

ZONE	LUMENS	% LAMP	% LUMINAIRE
0-30	369.4	7.1%	8.2%
0-40	646.5	12.4%	14.4%
0-60	1,320.9	25.4%	29.4%
60-90	923.3	17.8%	20.6%
0-90	2,244.2	43.2%	50%
90-180	2,243.9	43.2%	50%
0-180	4,488.1	86.3%	100%

EFFICIENCY TOTAL: 86.3%

### AVERAGE LUMINANCE (CD/M2)

	0	22.5	45	67.5	90
0	3185	3185	3185	3185	3185
45	2864	3105	3369	3487	3557
55	2630	3042	3411	3591	3683
65	2298	2961	3459	3741	3856
75	1743	2880	3593	3932	4089
85	614	2943	3912	4340	4525

### COEFFICIENTS OF UTILIZATION - ZONAL CAVITY METHOD

EFFECTIVE FLOOR CAVITY REFLECTANCE: 20%

RCC %:	80				70				50			30			10			0
RW %:	70	50	30	0	70	50	30	0	50	30	20	50	30	20	50	30	20	0
RCR: 0	.92	.92	.92	.92	.85	.85	.85	.43	.72	.72	.72	.60	.60	.60	.48	.48	.48	.43
1	.82	.77	.73	.69	.75	.71	.67	.32	.59	.56	.54	.49	.47	.45	.39	.37	.36	.31
2	.74	.66	.60	.54	.67	.61	.55	.25	.51	.46	.43	.41	.38	.35	.33	.30	.28	.24
3	.66	.57	.50	.44	.61	.52	.46	.20	.44	.39	.35	.36	.32	.29	.28	.25	.23	.19
4	.60	.50	.42	.36	.55	.46	.39	.17	.38	.33	.29	.31	.27	.24	.25	.22	.19	.16
5	.55	.44	.36	.31	.50	.41	.34	.14	.34	.28	.24	.28	.24	.20	.22	.19	.16	.13
6	.51	.39	.32	.26	.46	.36	.29	.12	.30	.25	.21	.25	.21	.17	.20	.16	.14	.11
7	.47	.35	.28	.23	.43	.33	.26	.11	.27	.22	.18	.22	.18	.15	.18	.15	.12	.10
8	.43	.32	.25	.20	.39	.29	.23	.09	.25	.20	.16	.20	.16	.13	.16	.13	.11	.09
9	.40	.29	.22	.17	.37	.27	.21	.08	.23	.18	.14	.19	.15	.12	.15	.12	.09	.08
10	.37	.26	.20	.16	.34	.24	.19	.08	.21	.16	.12	.17	.13	.10	.14	.11	.09	.07