

HSL - AECH SERIES

Multi-Functional Fixture

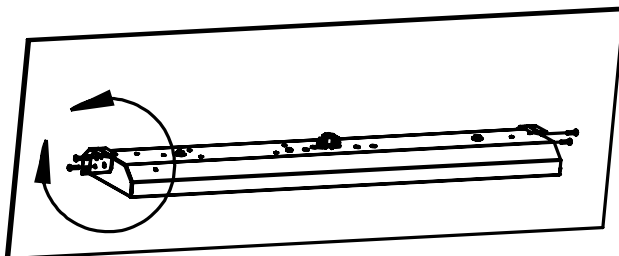
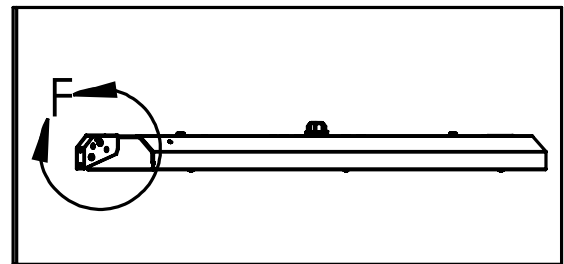
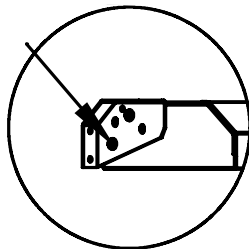
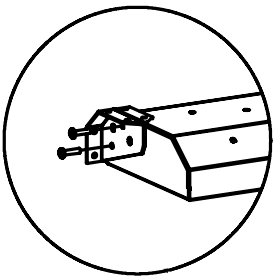


A highly durable Wall Mount Fixture. This fixture is designed to maximize light distribution and withstand weather conditions for exterior use. Extremely flexible design allows for mounting the wall pack at different mounting tilt options. Using the horizontal setting allows for dark sky. Applications include high mount and low mount building sides, tunnels, and any perimeter lighting, however this fixture can also be used for interior spaces that are wet or present a dusty environment.

Ordering Information

Example: HSL AECH WM SM 332 SDH

Series	Sensor	Lamp Count	Lamp Type	Ballast & Voltage [1]	Lamp Color	Options
<input type="text"/>	<input type="text"/>	<input type="text"/>	<input type="text"/>	<input type="text"/>	<input type="text"/>	<input type="text"/>
HSL - AECHWM Wall Mount Fixture	SM Sensor Microwave	2 3 4	32 54	MV Electronic, Multivolt (120-277) HMV Electronic MV, Hi-Lume (2) LMV Electronic MV, Lo-Lume (2) SDH Step Dim, High Ballast Factor PSMV Program Start MV - For T8 applications with out Step Dim.	830 835 840 850	PC Photo Cell Reflector Comes Standard with Wall Mount Option
				ADD Z before Ballast Code for GE ADD V before ballast Code for Philips Example: ZHMV	ADD TLED for LED after lamp color OR ADD LFL for Fluorescent after lamp color	



OPTIONAL: The angle of the fixture can be changed by utilizing a combination of mounting the gussets in reverse as shown, and the different mtg. screw locations on the fixture. Available angles: 0°, 20°, 45°. **FIXTURE MUST BE MOUNTED IN 0° POSITION TO BE DARK SKY COMPLIANT.**



HSL - AECH SERIES

Multi-Functional Fixture

A highly durable Pole Mount Fixture. This fixture is sturdy and designed to maximize light output and distribution and withstand weather conditions for exterior use. This fixture comes standard with a mounting knuckle that allows for different tilt options. In the horizontal position this fixture will be Dark Sky compliant. Applications include roadways and parking lots.

Ordering Information

Example: HSL AECH PM 454 MV SF

Series	Lamp Count	Lamp Type	Ballast & Voltage [1]	Lamp Color	Options
<input type="text"/>	<input type="text"/>	<input type="text"/>	<input type="text"/>	<input type="text"/>	<input type="text"/>
HSL - AECHPM Pole Mount Fixture	3 4	32 54	MV Electronic, Multivolt (120-277) HMV Electronic MV, Hi-Lume (2) LMV Electronic MV, Lo-Lume (2) SDH Step Dim, High Ballast Factor PSHMV Program Start High MV - For T8 applications with photo cell or other controls <small>ADD Z before Ballast Code for GE ADD V before ballast Code for Philips Example: ZHMV</small>	830 835 840 850	SF Slip Fitter
				<small>ADD TLED for LED after lamp color OR ADD LFL for Fluorescent after lamp color</small>	

