

CATALOG#:

PROJECT:

TYPE:

# Series HSL CPY

## Economy LED Canopy

This LED Canopy Fixture is great for many applications. The HSL CPY is extremely efficient, and with the new lumen and wattage package options, this fixture can provide savings of up to 60% to 90% over conventional canopy lighting. With the wide light distribution pattern this fixture is perfect for use in: Parking structures, Storage areas, Shopping - strip center covered walkways, Building entryways, Stairwells and any other lower ceiling applications.

### CONSTRUCTION

Polyester powder dark bronze finish. Multi-stage process produces 3 mil thickness for superior corrosion resistance and maximum durability. Precision die-cast aluminum housing with stainless steel fasteners.

### MOUNTING

Three 1/2" threaded conduit and one 3/4" conduit entry points.  
Surface mount only

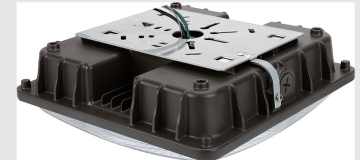
### DIMENSIONS

9.52 in X 9.52 in X 3.19 in

### Emergency Option



Emergency Battery



### FEATURES & BENEFITS

- Sealed die-casting profile for indoor and outdoor applications
- Rugged construction allows for use in punishing environments
- Suitable for use in -40°C to +40°C (-40°F to 104°F)
- Polycarbonate optical lens with heat resisting
- Three 1/2" threaded conduit and one 3/4" conduit entry points
- Multiple voltage input is available, support 120-277V
- Low profile design
- UL/cUL listed for wet locations
- Lumen output from 3800 lm-8000 lm

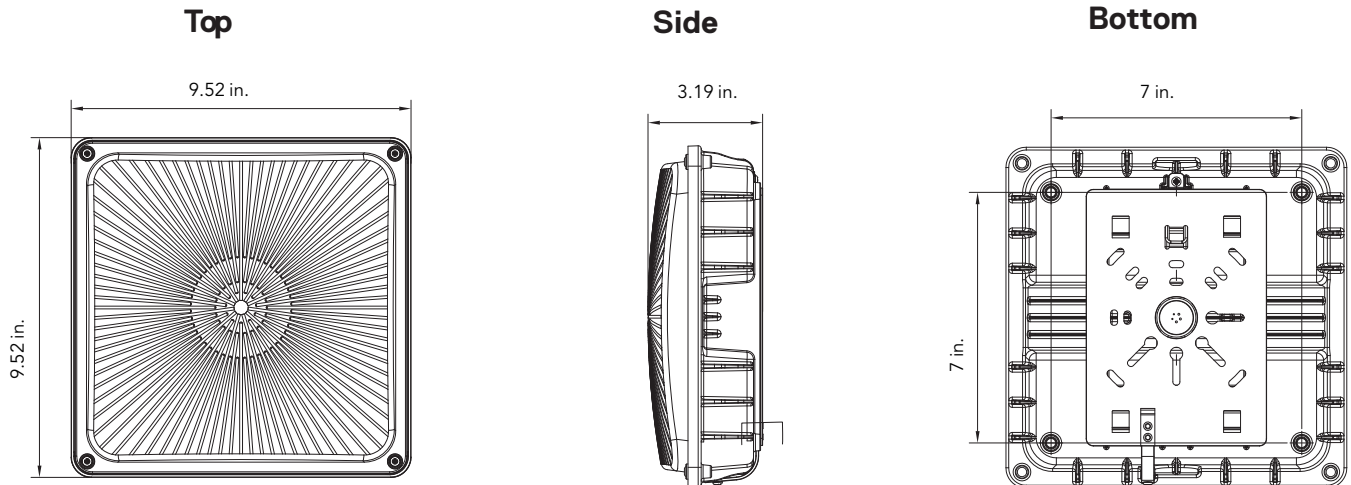
## Series HSL CPY Economy LED Canopy

### ORDERING INFORMATION

HSLCPY	10L	45W4200L	DMV	50K
<b>Series</b>	<b>Size</b>	<b>Wattage &amp; Lumen</b>	<b>Driver</b>	<b>Kelvin Temperature</b>
HSL CPY	10L		DMV	50K
LED Low Profile Canopy	10" x 10"		0-10V Dimming	5000K
		<b>*27W3800L</b>		
		27 System Watts, 3800 Delivered Lumens		
		<b>*40W5400L</b>		
		40 System Watts, 5400 Delivered Lumens		
		<b>*60W8000L</b>		
		60 System Watts, 8000 Delivered Lumens		

Example: HSLCPY10L40W5400LDMV50K

### DRAWINGS & IMAGES



### PHOTOMETRICS

Parking Garage

