



HSL - DID SERIES

Direct/Indirect Linear Strip

Medium body decorative strip with reflectors and basket options for offices, conference rooms, retail and utility areas requiring concentrated illumination in a commercial quality configuration with more style. By choosing the reflector types and basket materials, the lighting designer can control the light intensity.

SIZE W x L x H in inches (mm)

Fixture width and height vary with reflector selection

Fixture length = lamp(s) length

MATERIALS & FEATURES

Housing is die-formed and embossed code 22 gage steel. Body finish is high reflectance baked white enamel. Wiring knockouts are provided on back and end of housing. Reflectors attach with quarter turn fasteners; no tools required for ballast access. End plate doubles as coupler for continuous row mounts. Reflectors available in several materials. Perforated metal reflectors and baskets are made of cold rolled steel treated with rust inhibitor. Perforated metal parts are post painted with a durable baked polyester coat. Each piece is formed by our state-of-the-art multi-radii machine for consistency.

- P10 - Perforated Reflector
- W30, economical white steel reflectors, for abusive locations
- M24, Premium full specular (mirrored) reflectors, for abusive locations

LAMP

1 or 2 Lamp Positions in Cross section.

MOUNTING

Surface mount, chain hung, stem mount. See end of chapter T02Strip for accessory mount kits.

LISTING

Fixture and Ballast: UL Listed.

Ballast: Thermally protected, class P, HPF,

Non PCB; unless specified otherwise.

TYPICAL OPTIONS AND ACCESSORIES

Emergency ballasts, whips, fuses, and wire guards.

See options page at the end of the T02Linear section, or contact factory for more details.

ORDERING INFORMATION

Example: DID 232 W30 BF MV

DID	2	32	8	W30	BF	MV
	(Lamps not Included)					
	Lamp Count	Lamp Type [1]	Tandem Code [2]		Ballast & Voltage [1]	
Series	1 or 2	40 48in. T12 [6]	8 8ft. Tandem (Double Lamp Count)		E120 Electronic, 120V	
DID	1 or 2	F96T12 96in. T12 Slimline			E277 Electronic, 277V	
Direct/Indirect	1 or 2	F48T12HO 48in. T12	8 8ft. Tandem (Double Lamp Count)		MV Electronic, Multivolt	
	1 or 2	F96T12HO 96in. T12 [8]			H120 Electronic, Hi-Lume 120V	
	1 or 2	32 48in. T8	8 8ft. Tandem (Double Lamp Count)		H277 Electronic, Hi-Lume 277V	
	1 or 2	59 96in. F96T8 59W Slimline			HMV Electronic, Hi-Lume Multivolt	
	1 or 2	F48T8HO 48in. T8	8 8ft. Tandem (Double Lamp Count)		L120 Electronic, Lo-Lume 120V	
	1 or 2	F96T8HO 96in. T8			L277 Electronic, Lo-Lume 277V	
	2	28 46in. T5 [5]	8 8ft. Tandem (Double Lamp Count)		LMV Electronic, Lo-Lume Multivolt	
	2	54 46in. T5HO [5]	8 8ft. Tandem (Double Lamp Count)		M120 Magnetic, 120V	
					M277 Magnetic, 277V	
					S Residential 120V Ballast	
					Basket Type	
					BP Perforated Basket	
					BF Fine Fluted Lens Basket	
					BL Smooth White Lens, Basket	
					Reflectors [3]	
				W30 White Steel Reflector		
				P10 Perforated Reflector		
				M24 Full Specular (mirrored) Reflector		
					Options [1]	
					WP 6 ft. 3 wire 18 gauge whip	
					WP10 6 ft. 4 wire 18 gauge whip	
					EM Emergency ballast, 500 lumens	
					EM14 Emergency ballast, 1400 lumens	

Notes

[2] Tandem doubles length and lamp count. Same lamps in cross section, additional lamps end to end.

[3] Custom reflectors available to create any light distribution.

[4] HiLume and LoLume ballasts available for T8 lamps only.

[5] T5 & T5HO S body strips are full 24/36/48/96in length. See KDS series for shorter strips.

[6] Magnetic ballasts available for T8 & T12 only.

[7] Standard magnetic T12 ballasts for 48in lamp drive a 34W energy saver. Specify electronic to drive 48in T12 34 or 40W lamp.

[8] Electronic ballasts ONLY for F96T12HO.

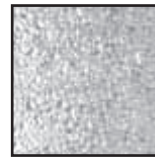
EM14 ballast req'd for T5HO lamps

HSL - DID SERIES

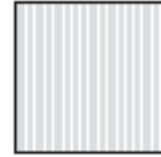
Direct/Indirect Linear Strip

All dimension are inches. Specifications subject to change with out notice.

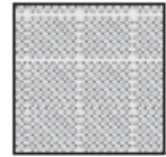
Basket Options



Smooth
White Lens



Fine Fluted
Lens



Perforated

