

HSL HBC SERIES

Premier Full Body High Bay

X1 / EI  **LED**

X1 / QUIK LED

The most economical, practical and user friendly series of LED fixtures with the energy savings, quality of light, long life and hassle-free maintenance. QUIK LED fixtures are UL Listed with the latest LED T8 Bypass lamps. T8 LED Fixtures provide more energy savings over comparable fluorescent fixtures and using bypass technology does not require a ballast.

FIXTURE DESCRIPTION:

This HSL HBC Series X1 / QUIK LED Fixture offers great performance from the special curved bottom full body design. This is a high efficiency high bay with premium performance for: low, medium and even high ceilings, depending on T8 LED lamp choice. The HSC HBC is ideally suited for: warehouses, manufacturing plants, sports facilities and retail spaces. A precision-formed reflector system available in either highly reflective mirror or enhanced white reflector achieve maximum light output. The QUIK LED high bay fixtures utilize LED T8 Bypass lamps for maximum energy savings potential. Since these lamps don't require any ballast or driver the only component that will ever need changing is the LED T8 lamp. The lamps are warrantied for five years. Unlike high bay fixtures that utilize LED arrays and drivers these fixtures have the flexibility to change wattage, lumens, and color temperature simply by changing the lamps without the need to call a licensed electrician. Based on ceiling height, these fixtures can replace an HID high bay using half of the wattage. Optional wireguard allows for additional safety and easy lamp access.

Lamp Specifications:

Our T8 LED Lamps are available in 2 or 4 ft Sizes in different wattage, lumen and color temperature options. Savegreen Lighting is a premier supplier of LED T8 lamps and makes a variety of Bypass T8 lamps to meet the needs of your special application. Options include more energy efficient 9W, 12W, 15W and 18W. We also manufacture many of our LED Lamps for high lumen output. Double ended LED T8 Lamps are also available. Consult your sales specialist.

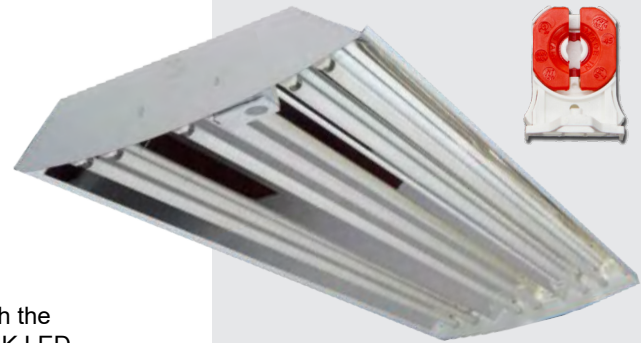
CONSTRUCTION

Housing is 22 gauge prepainted steel. Air vents surround the lamps in the back of the fixture to maximize lamp performance, reliability and life. High reflective mirror or enhanced white reflectors are computer designed to maximize photometric performance and put the light where you need it. Reflector snaps into fixture with no tools and is easily removable. Access plate in the back makes wiring fast and hassle-free. Back of fixture is designed with built-in mounting holes for tong hanger, cable kit and surface mount. Uplight slots are optional to add uplight. Integral Occupancy Sensor is optional and wire guard is available on some models/lamp configurations.

MOUNTING

Chain, V Hangers, Pendant, Stem, Cable Kit

Full Body Curved Bottom High Bay



SG
Inside

50,000 Hour Life with 5 Year Warranty
Beam Angle 140 Degree

LAMP

4, 6, 8, 10 or 12 lamp positions

SIZE W x L x H in inches (mm)

4 lamp: 11.4W x 48.1L x 3.6D
6 lamp: 16.4W x 48.1L x 3.6Dp
8 lamp: 16.4W x 48.1L x 3.6Dp
10 lamp: 20.4W x 48.1L x 3.6Dp
12 lamp: 20.4W x 48.1L x 3.6Dp

Optional Dimming Options:

Some Bypass 4 FT lamps are available with a dimming option. Specially designed dimming lamps require an external driver that runs 1 or 2 lamps. So more than 2 lamps require multiple external drivers.

Emergency Options:

The standard X1 LED Lamps require an inverter or an All-in-one emergency kit that includes LED array, battery and driver. Dimmable T8 LED with external driver works with standard LED EM. For a 5 watt inverter that is similar to adding a 500 Lumen emergency in a conventional fluorescent fixture, add "INV5W" to the end of the item number. This will allow 5 watts of one lamp to work in emergency mode. Or add "EMKT12" to the end of the item number to get a 12W stand alone emergency kit in the fixture that comes with a driver, battery and small LED array that works in Emergency mode.



SG
Inside

HSL HBC SERIES



Premier Full Body High Bay

ITEM NO.	DESCRIPTION
HSLHBC432M23X1LN18W50	High Bay 48 inch 8400 Lumens w/4x18W LED T8 5000K Lamps Included
HSLHBC632M23X1LN18W50	High Bay 48 inch 12600 Lumens w/6x18W LED T8 5000K Lamps Included

Change 50 to 35 or 40 for different Kelvin.
 Change Lamp Wattage from 18 Watts to 15W on 4FT. or to 26W on 4' for High Lumen Option

Optional Wire Guard - ADD WG to end of code.
Additional Models available with different lamp counts, consult your LITE Sales Specialist.

For 5W Emergency, Add INV5 at the End of Item Number for KTEMRGLED5500AC. See other options at www.savegreenlighting.com or consult your sales specialist. For fixtures wired for double ended lamps, change X1 to X2 and see the Savegreen Lamps below for the proper Double Ended Lamp. For fixtures without lamps included, remove the "LNXXX" at the end of the item number and have X1 or X2 for Single or Double Ended wiring.

LN18W40 - Lamp Specification

50,000 Hour Life with 5 Year Warranty
 Beam Angle 140 Degree
 Aluminum Base and Aluminum Housing with Glass Cover
 Operating Temperature: - 20C to 50C
 Color Temperature: 3500K, 4000K, 5000K
 G13 Pins (Same as Fluorescent Linear T8 Bipin)
 AC100 – 277V without Ballast
 Single Ended or Double Ended Power (If not specified use X1 Single Ended Power)

Savegreen T8 or T5 LED Lamp Options

To include one of these lamps in fixture, remove "LNXXX" and add Savegreen Inside code below.
 (See www.savegreenlighting.com for specification sheets or more information on these lamp options.)

VERSION	SAVEGREEN INSIDE	SAVEGREEN ITEM NO.
Popular	SGB15W35	LT8BG48L15W1740LXXK
Standard	SGS29W35	LT8BGC24L9W1050LXXK
Standard	SGS312W35	LT8BGC36L12W1200LXXK
Standard	SGS15W35	LT8BGC48L15W1740LXXK
Premium	SGP12W35	L10T8BGC48L12W1750LXXK
Premium	SGP15W35	L10T8BGC48L15W2000LXXK
Premium	SGP18W35	L10T8BGC48L18W2500LXXK
High Output	SGH26W40	LT8BGC48L26W3500LXXK
Double Ended	SGD18W35	LT8BDGC48L18W2100LXXK
T5HO	SGT525W40*	LT5BG46L25W3300LXXK
Magic	SGM18W35K	LT8ABP48L18W2250LXXK
Magic	SGM18W35K	LT8ABP48L15W1875LXXK
Magic	SGM215W35K	LT8ABP24L15W1875LXXK

Change 35 to 40 or 50 for different Kelvin. *For T5, CCT 40K and 50K available.

Special
WARRANTY

Consult Lite for Options

