

## Fluorescent High Bay



# HSL - HBC Series

## Premier Fluorescent Full Body High Bay

High efficiency high bay premium performance fixture designed for: T8 and T5 technology (Now also available for: LED Tubes and/or LED Boards and drivers). Fixture is manufactured in different size bodies to accommodate different quantities of lamps for different applications. This fixture is perfectly suited for: Warehouses, manufacturing plants, sport facilities and retail spaces. The curved bottom allows for a broad distribution light pattern but can be controlled for narrow aisle lighting with the proper reflector. A precision – formed reflector system is available in either highly reflective mirror or enhanced white reflector – both to achieve maximum light output for ceiling heights from 15 feet to 40 feet and above. Modifications can also be made for lamp counts and reflector types.

### SIZE H x W in inches (mm)

- 4 lamp: 11.4W x 48.1L x 3.6Dp
- 6 lamp: 16.4W x 48.1L x 3.6Dp
- 8 lamp: 16.4W x 48.1L x 3.6Dp
- 10 lamp: 20.4W x 48.1L x 3.6Dp

### Ordering Information

Example: HSL - HBC 632 M23 MV

Series	Lamp Count	Lamp Type [1]	Reflector [2]	Ballast & Voltage [1]	Options [1]
<b>HSL - HBC</b>	<b>6</b>	<b>32</b>	<b>M23</b>	<b>MV</b>	
<b>HSL - HBC</b> Fluorescent High Bay Full Body  <b>HSL - HBCIS</b> Fluorescent High Bay Full Body with Integral Occupancy Sensor (6 Light Only)	<b>4,6,8,10 or 12</b>  Lamps not included	<b>32</b> 48in. T8 <b>54</b> 46 in. T5HO	<b>M23</b> Full specular mirror reflector, no uplight, wide distribution  <b>M21</b> Full specular mirror reflector, no uplight, narrow distribution  <b>W13</b> Enhanced white reflector, no uplight, standard distribution  <b>M23UP</b> Full specular mirror reflector, wide distribution, with uplight slots  <b>M21UP</b> Full specular mirror reflector, narrow distribution, with uplight slots  <b>W13UP</b> Enhanced white reflector, standard distribution, with uplight slots	<b>MV</b> Electronic, Multi volt , 120V -277V  <b>HMV</b> Electronic, Multivolt , HBF High Ballast Factor  <b>E347</b> Electronic 347V  <b>E480</b> Electronic 480V  <b>PMV</b> Electronic, Program start, T8  <b>PHV</b> Electronic, Program start, High Ballast Factor, T8 For 347V or 480V - ADD EXXX After "H" example: PHE347  Add Step Down Transformer Incl: T before 347 or 480 exp: T347  NOTE: Consult Sales for LED T8 Tube Codes: Bypass Options	<b>LN</b> Lamp Included with Kelvin temperature-Ask for Quote  <b>MDT4</b> Occupancy Sensor, wide angle  <b>MDF4</b> Occupancy Sensor & Daylight  <b>CS8P</b> 5-15P 120V 8ft. Cord & Plug  <b>C8</b> 8ft. Cord, No Plug  <b>C10</b> 10ft. Cord, No Plug  <b>C12</b> 12ft. Cord No Plug  <b>WP</b> 6ft. 3 wire, whip  <b>WP4</b> 6ft. 4 wire, whip  <b>EM</b> Emergency ballast, 500 lumens  <b>EM15</b> Emergency ballast, 1400 lumens  Note: Consult factory for occupancy and daylight sensors

1. See current Buyer's Guide for additional ballast, lamps and other options
2. Custom reflectors available to create any light distribution
3. HiLume and LoLume ballasts available for T8 lamps only
4. Available in bulk pack
5. 4 OR 6 light only
6. EM for T5, T5HO requires T5 emergencies

For Specific Manufacturer - Add noted letter (below) before the ballast code:

Z - GE V - Advance  
 F - Universal Y - Sylvania  
**Example: ZMV (GE BF Multi Volt)**

### Accessories

Order as Separate Part Number

- HSL-GT310A** Self leveling hanging cable
- HC101** Chain kit, Included 6S Hooks and 20 ft. chain
- HBP4WG** Wireguard, 4 Lamp unit
- HBP6WG** Wireguard, 6 Lamp unit
- 5HBD** Single Point Hanger Adapter



## HSL - HBC Series

Premier Fluorescent Full Body High Bay

### SIZE H x W in inches (mm)

- 4 lamp: 11.4W x 48.1L x 3.6Dp
- 6 lamp: 16.4W x 48.1L x 3.6Dp
- 8 lamp: 16.4W x 48.1L x 3.6Dp
- 10 lamp: 20.4W x 48.1L x 3.6Dp

### LAMP

- 4,6,8,10 or 12 lamp positions

### Electrical

- All ballasts are Class P rated and UL/cUL listed. Our ballasts are thermally protected, sound rated and tightly secured to chassis. Consult for the specific ballast required. Available in 120V, 277V, 347V and 480V.

### LISTING

- UL/cUL listed. Ballasts available to meet CEE certified.

### Typical Options and Accessories

- Emergency ballasts, Cord sets, Whips, Occupancy Sensors, Hanging kits, Wire guards. Contact factory for additional options.

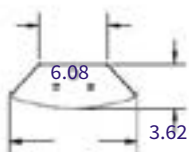
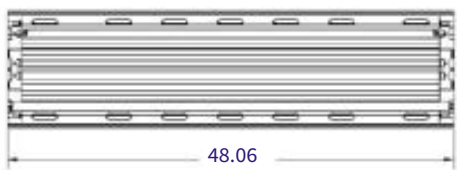
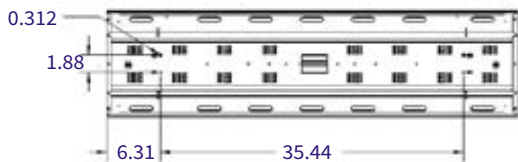
### MOUNTING

- Designed for surface, pendant, stem or chain hanging. Mounting holes are provided for simple, fast installation. See Buyers Guide for list of all mounting options. Available and sold separately.

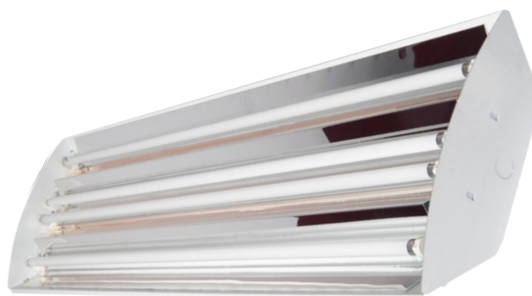
### CONSTRUCTION

- Housing is 22 gauge prepainted steel. Air vents surround the ballast and lamps to maximize lamp and ballast performance, reliability and life. Reflectors are computer designed to maximize photometric performance and put the light where you need it. Reflector snaps into fixture with no tools and is easily removable for ballast maintenance. Access plate in the back makes wiring fast and hassle-free. Back of fixture is designed with built-in mounting holes for tong hanger, cable kit and surface mount. Uplight slots are optional to add uplight. Integral Occupancy Sensor is optional on 6 light series which is ideal for wire guard applications.

### 4 Light



11.39



4 Light T8 with Mirrored Reflector



Back of Fixture



4 Light T8 with White Reflector with Uplight Slots



## HSL - HBC Series

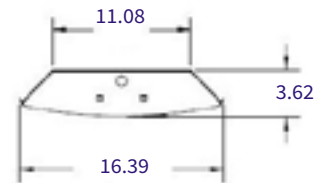
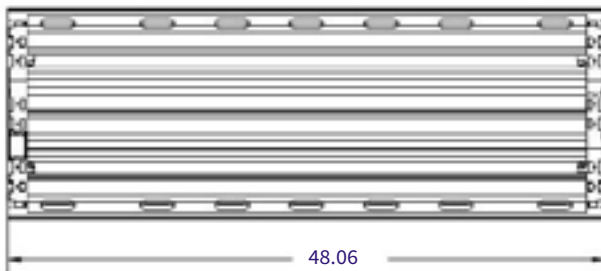
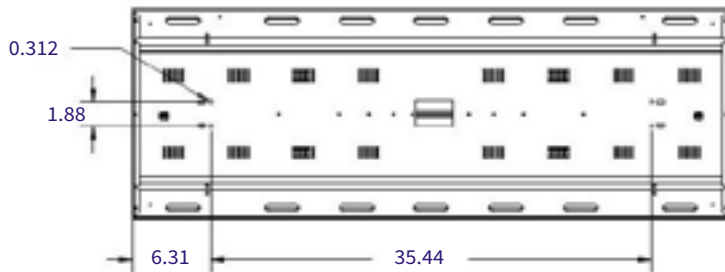
Premier Fluorescent Full Body High Bay



6 Light T5 with Integral Occupancy Sensory and Mirror Reflector



Back of Fixture



## HSL - HBC Series

Premier Fluorescent Full Body High Bay

8 Light

