

Series HSL LWP

LWP Series Wall Pack

FEATURES & SPECIFICATIONS

INTENDED USE

Energy smart LED fixtures for wall mount are ideal for circulation spaces in commercial or multi-family applications. This compact fixture is great for canopy or car port lighting. Clean and sleek look is great what space is tight and you are looking for a fixture with a punch. Consult factory for tamper proof options and other lens options.

SPECIFICATIONS

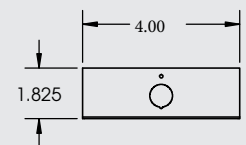
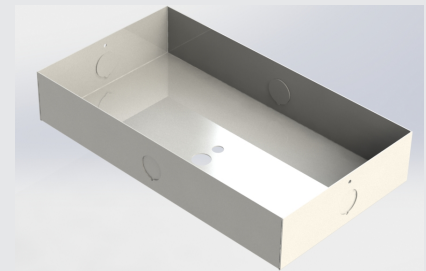
Size: 13.0"L x 4.0"W x 5.0"H
 Voltage: 120V/277V
 Input Wattage: 15W
 LED: CRI 80, 50000 hours rating System
 Lumen: 1500 lm
 Warranty: 5 years

FEATURES

- Powder coated fitter
- Clear acrylic or white acrylic lens
- Suitable for Wet Location
- Mounting hardwar

OPTIONS

- Clear or white polycarbonate lens
- Tamper proof screws
- Extended back
- Custom Paint



* Special Made Deeper housing for LED

ORDERING INFORMATION

Example: HSL LWPCLACR15W1500LDMV40K

HSL LWP		CLAC		R15W1500L		DMV		40K	
Series		Lens		Wattage and Lumen		Driver		Kelvin Temperature	
LWP	Large Wall Pack	CLAC	Clear Acrylic Lens	R15W1500L	15 System Watts, 1500 Delivered Lumens	DMV	Dimmable Driver 0-10V	40K	4000K
		WHAC	White Acrylic Lens						
		CLPC	Clear Polycarbonate Lens						
		WHPC	White Polycarbonate Lens						