

# HSL Series SS213

## Wall Mount, Up & Down Light Rectangular Profile SMARTSENSE

The 213 is a specification grade wall mount for “over the bed” applications, and may also be used in bath, stairwells, and office applications. With optional dividers, front baffles, and dual drivers the up and down light are individually controlled. The rectangular shape provides a clean, crisp profile.

**ABOUT SMARTSENSE** - Our popular 213 series versatile linear fluorescent or LED fixtures are now available with integral ultrasonic occupancy sensor to sense motion within a space and automatically turns on lights even when the sensor has no direct line of sight to occupants. After the area is vacated and the time delay has elapsed, the sensors automatically turn the lights off. Ultrasonic detection operates by transmitting sound waves throughout an area and measuring the speed at which they return. Movement increases the return frequency, which triggers occupancy. Saylite Ultrasonic smart sensors provide functions for testing, overriding the fixture “ON” and a 72 hour lamp burn-in mode.

### CONSTRUCTION

Housing is die-formed and embossed code 22 gauge steel. Standard finish is high reflectance baked white enamel; custom finishes are available as an option. Wiring knockouts are provided on back of housing. The clear, ribbed lens is fully captured by the end plate. End cap held in place with acorn nut.

### MOUNTING

Direct wall mount

### TYPICAL OPTIONS & ACCESSORIES

Custom finishes, internal divider, front baffle, pull chains, convenience outlets and emergency battery. Contact factory for more details.



### DIMENSIONS

4.50"H x 4.4"W  
Available in 24 1/4", 36 1/4"  
and 48 1/4" lengths

### FEATURES & BENEFITS

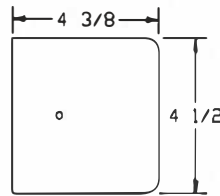
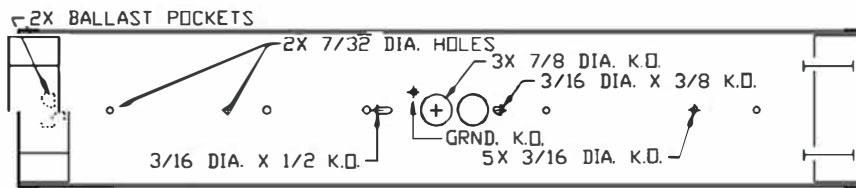
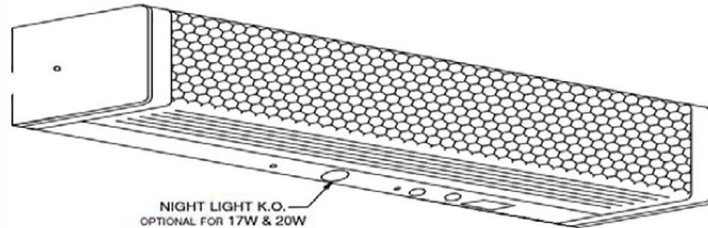
- Optional front baffle restricts light to up and down only (no front light). Add dual dividers for separate control of up and down light.
- Contact factory for custom night light options.
- Suitable for dry or damp locations
- >50,000 hours of L70 LED life
- CRI>80
- 0-10 Volt dimmable 120-277V
- Power factor 0.99
- 5 year warranty

## HSL Series SS213

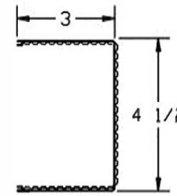
Wall Mount, Up & Down Light  
 Rectangular Profile  
 SMARTSENSE

### DRAWINGS & IMAGES

Side

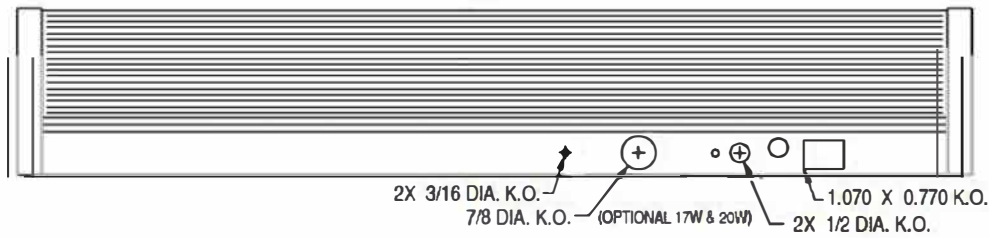


END



LENS

Top



## HSL Series SS213

### ORDER INFORMATION

Wall Mount, Up & Down Light  
 Rectangular Profile  
 SMARTSENSE

#### 24L - Standard

SERIES	LENS MATERIAL	SIZE	WATTAGE & LUMENS	BAFFLE	DRIVER	COLOR			
SS213	A Acrylic	24L 24"	E15W2050L	15 Watts 2050 Lumens	Blank DF	No Baffle Front Baffle	DMV 0-10V Dimming	30K	3000K
			E24W3000L	24 Watts 3000 Lumens				35K	3500K
			E28W3450L	28 Watts 3450 Lumens				40K	4000K
				* *				50K	5000K

#### OPTIONS

SW2	Pull chain, 2 way switching (use with single ballasts)
GCO	Grounded convenience outlet (North American 3 prong)
EM	Emergency ballast, 500 lumens

#### 48L - Standard

SERIES	LENS MATERIAL	SIZE	WATTAGE & LUMENS	BAFFLE	DRIVER	COLOR			
SS213	A Acrylic	48L 48"	E30W4100L	30 Watts 4100 Lumens	Blank DF	No Baffle Front Baffle	DMV 0-10V Dimming	30K	3000K
			Y40W4000L	40 Watts 4000 Lumens				35K	3500K
			E48W6000L	48 Watts 6000 Lumens				40K	4000K
			E57W6900L	57 Watts 6900 Lumens				50K	5000K
	* *								

#### OPTIONS

SW2	Pull chain, 2 way switching (use with single ballasts)
GCO	Grounded convenience outlet (North American 3 prong)
EM	Emergency ballast, 500 lumens

**Note:**

\*Programmable LED drivers allow custom configured wattages and corresponding lumens.

We reserve the right to change design, materials, LED's and finish in any way that will not alter installed appearance or reduce function and performance.