

SSSTR/SSSTS Series

SMARTSENSE

LED Wall Mount Rectangular or Half Moon Profile



SSSTR



SSSTS



Ultrasonic technology for open area detection with line-o-sight obstructions

FEATURES & SPECIFICATIONS

ABOUT SMARTSENSE

Our popular SSSTS/SSSTR series linear LED fixtures is now available with integral ultrasonic occupancy sensor to sense motion within a space and automatically turns on lights even when the sensor has no direct line of sight to occupants. After the area is vacated and the time delay has elapsed, the sensors automatically turn the lights off. Ultrasonic detection operates by transmitting sound waves throughout an area and measuring the speed at which they return. Movement increases the return frequency, which triggers occupancy. Texas Fluorescents Ultrasonic smart sensors provide functions for testing, overriding the fixture "ON" and a 72 hour lamp burn-in mode.

INTENDED USE

The SSSTS/SSSTR series is a specification grade wall mount for "over the bed" applications, and may also be used in bath, stairwells, and office applications. This luminaire carries up to 58 watts. The rectangular and round shape provide a clean, crisp profiles.

SIZE H x W in inches (mm)

3.44H x 4.47W

Available in 24 1/4" and 46 1/4" lengths

MOUNTING

Direct wall mount.

MATERIALS & FEATURES

Housing is die-formed and embossed code 22 gage steel. Standard finish is high reflectance baked white enamel; custom finishes are available as an option.

Wiring knockouts are provided on back of housing. The clear, ribbed lens is fully captured by the end plate. End cap held in place with acorn nut.

• CONTACT FACTORY for custom options.

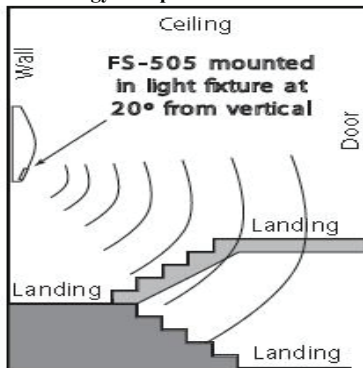
TYPICAL OPTIONS AND ACCESSORIES

Custom finishes, convenience outlets, and Emergency battery backup. CONTACT FACTORY for custom. See options page at the end of the T02WallF section, or contact factory for more details.

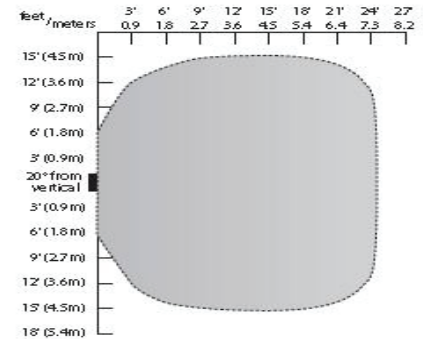
APPLICATIONS FOR SMARTSENSE

Typical applications for this SmartSense Series include open office cubicles, offices, conference rooms, restrooms and hallways. This technology also provides superior detection in hard surfaced areas, such as stairwells and hallways. Bi-level lighting control is available (consult factory for options) resulting in up to 66% energy savings for fixtures that are on 24-hours a day, seven days a week while still providing enough light for safety and egress.

Ultrasonic technology for open area detection with line-of-sight obstructions.



WIRING & COVERAGE



FS-505

FEATURES

Time Delay: 5 to 30 minutes

Coverage at 8' height; 24' diameter

*Consult factory for low wattage lamp that is always on

SSSTR/SSSTS Series

SMARTSENSE

LED Wall Mount Rectangular or Half Moon Profile



Ultrasonic technology for open area detection with line-of-sight obstructions



SSSTS



SSSTR

ORDERING INFORMATION

24L - STANDARD

Example: SSSTS^{MW}24LE14W1200LSTMV40K

SSSTS	MW	24L	E14W1200L	STMV	40K
Series		Size	Wattage and Lumen	Driver	Color Temperature
SSSTS LED Smartsense Wall Mount Rectangular Profile		24L 24"	E14W1200L 14 System Watts, 1200 Delivered Lumens	STMV Step Dimming *Dimming Range 50%/100% Output current	30K 3000K 35K 3500K 40K 4000K 50K 5000K
SSSTR LED Smartsense Wall Mount Half Moon Profile	Lens Material		E27W2400L 27 System Watts, 2400 Delivered Lumens		
	MW Matt White				

48L - STANDARD

Example: SSSTS^{MW}48LE36W3500LSTMV40K

SSSTS	MW	48L	E14W1200L	STMV	40K
Series		Size	Wattage and Lumen	Driver	Color Temperature
SSSTS LED Smartsense Wall Mount Rectangular Profile		48L 48"	E36W3500L 36 System Watts, 3500 Delivered Lumens	STMV Step Dimming *Dimming Range 50%/100% Output current	30K 3000K 35K 3500K 40K 4000K 50K 5000K
SSSTR LED Smartsense Wall Mount Half Moon Profile	Lens Material		E58W5000L 58 System Watts, 5000 Delivered Lumens		
	MW Matt White				

* Consult for more options

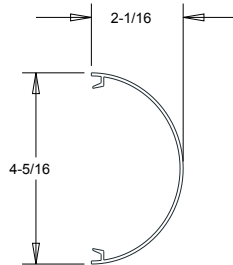
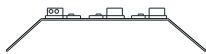
Dimensions

SSSTR Series SMARTSENSE LED Wall Mount Half Moon Profile

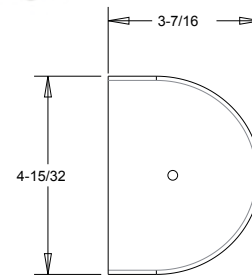
LED	
SIZE	LENGTH
(1 or 2) 22" Boards	24 ¼
(2 or 4) 22" Boards	46 ¼



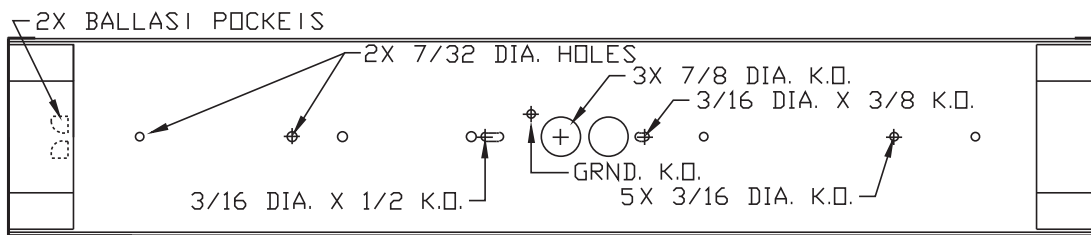
SSSTR



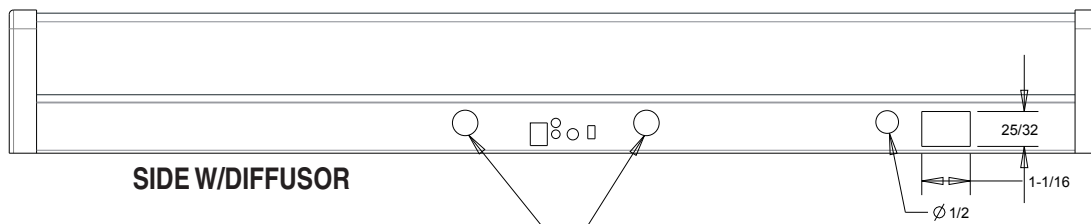
DIFFUSOR



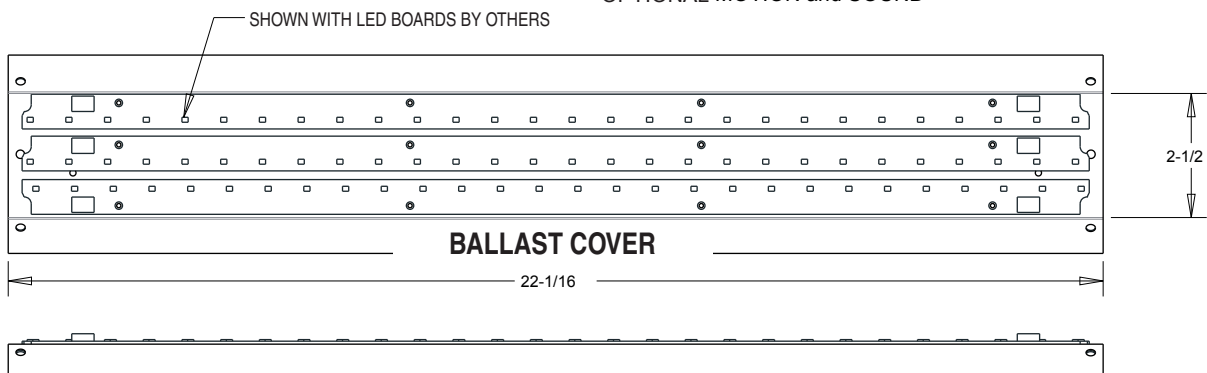
END



TOP



SIDE W/DIFFUSOR



BALLAST COVER

Dimensions

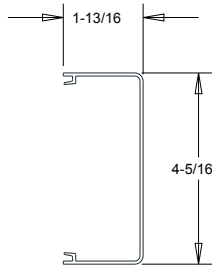
SSSTS Series SMARTSENSE

LED Wall Mount Rectangular Profile

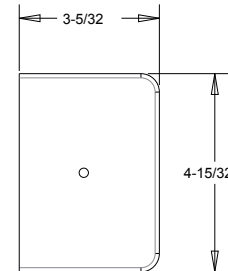


SSSTS

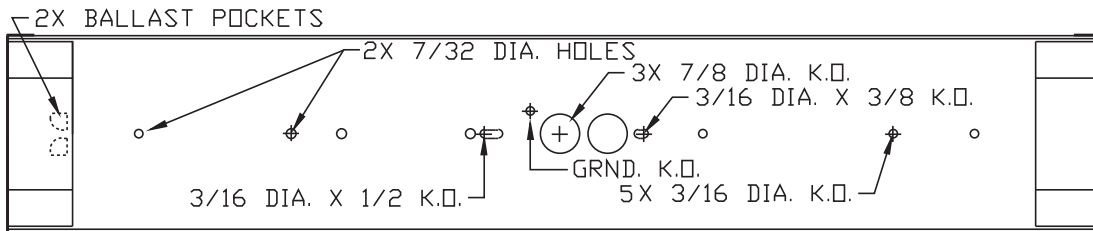
LED	
SIZE	LENGTH
(1 or 2) 22" Boards	24 1/4
(2 or 4) 22" Boards	46 1/4



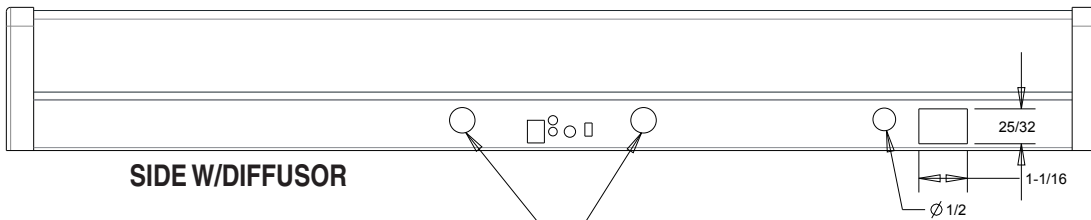
DIFFUSOR



END



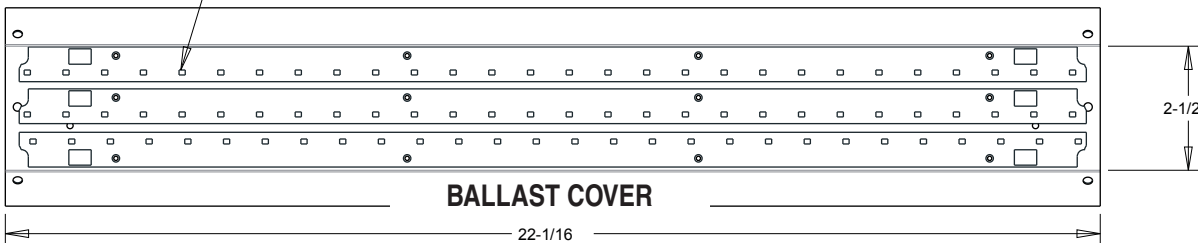
TOP



SIDE W/DIFFUSOR

OPTIONAL MOTION AND SOUND

SHOWN WITH LED BOARDS BY OTHERS



BALLAST COVER

